



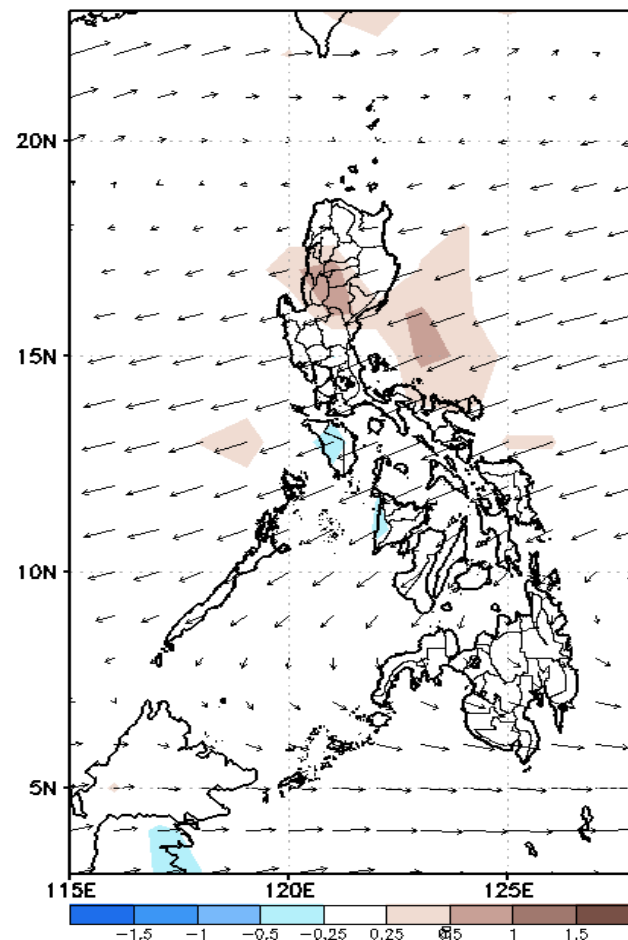
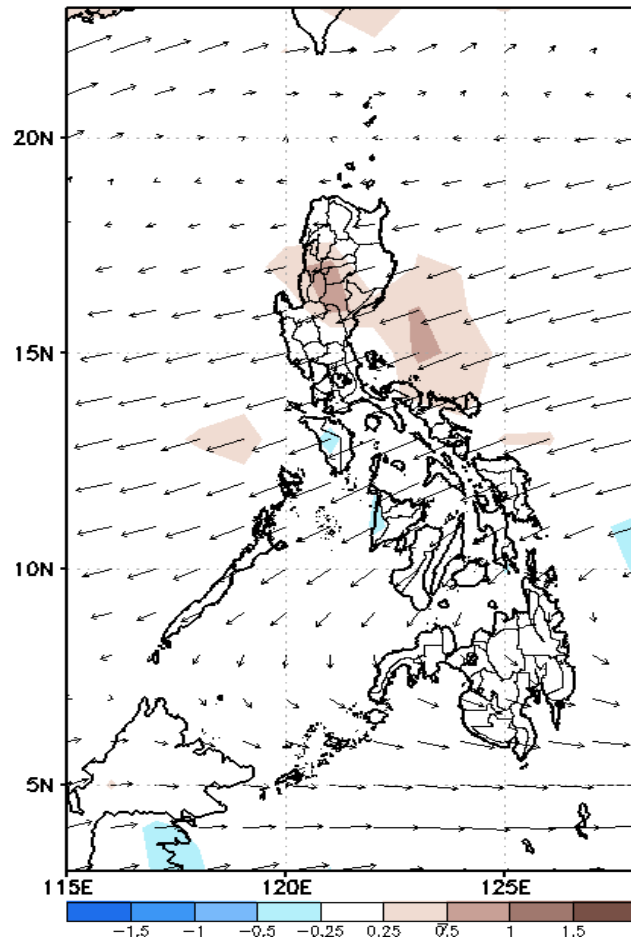
Week 1 & Week 2 Forecast for the Philippines using GEFS Model



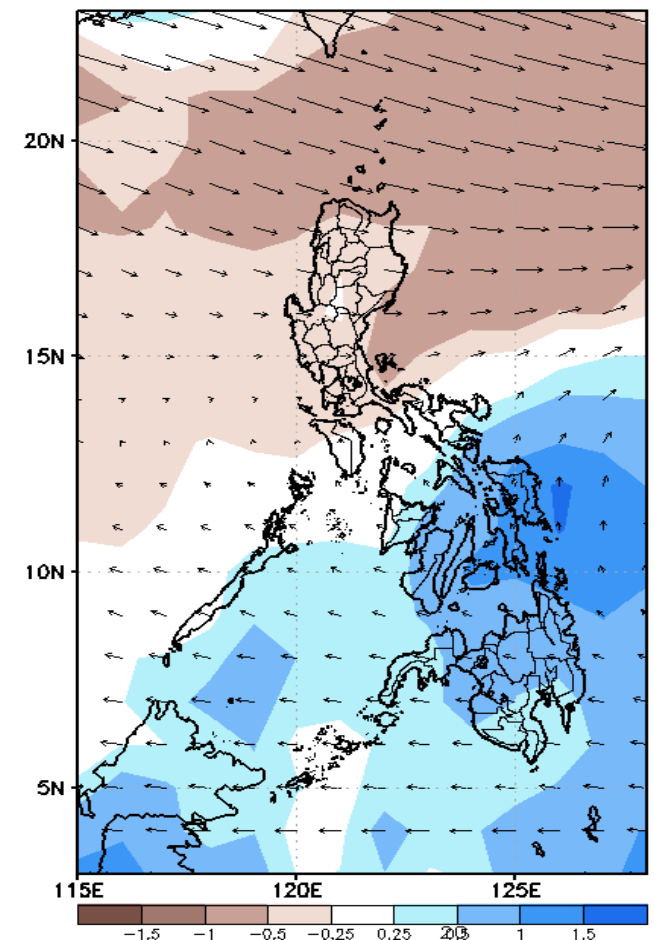
GEFS Week-1 Forecasts: Wind Anomaly Forecast

Week 1: May 01-07, 2023

GEFS Week-1 850-hPa Divergence and Wind Anom
Valid: 20230501 - 20230507

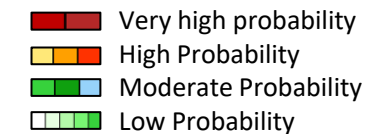


GEFS Week-1 200-hPa Divergence and Wind Anom
Valid: 20230501 - 20230507



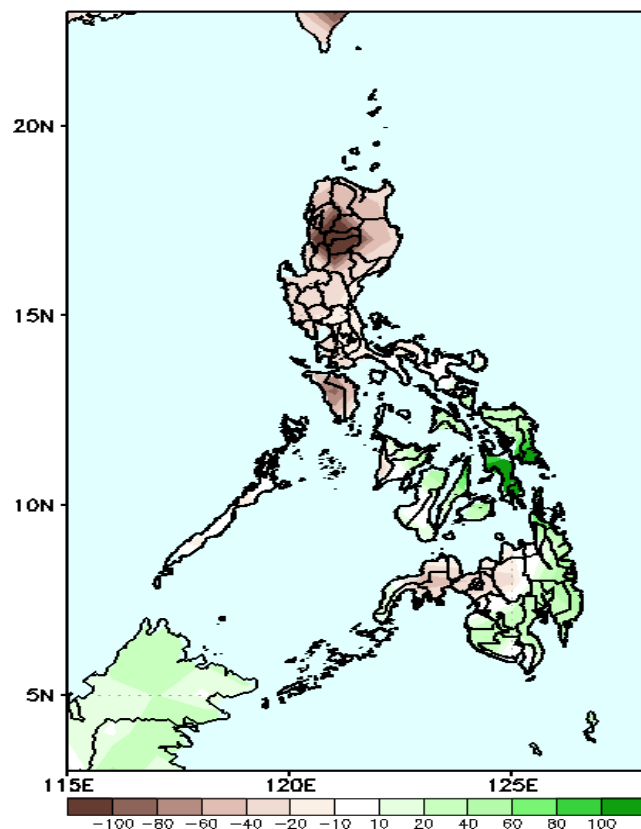
Easterlies is forecasted to affect most parts of the country; expect dry and hot weather during the forecast period.

Precipitation Anomaly and Exceedance Probability > 25/50 mm



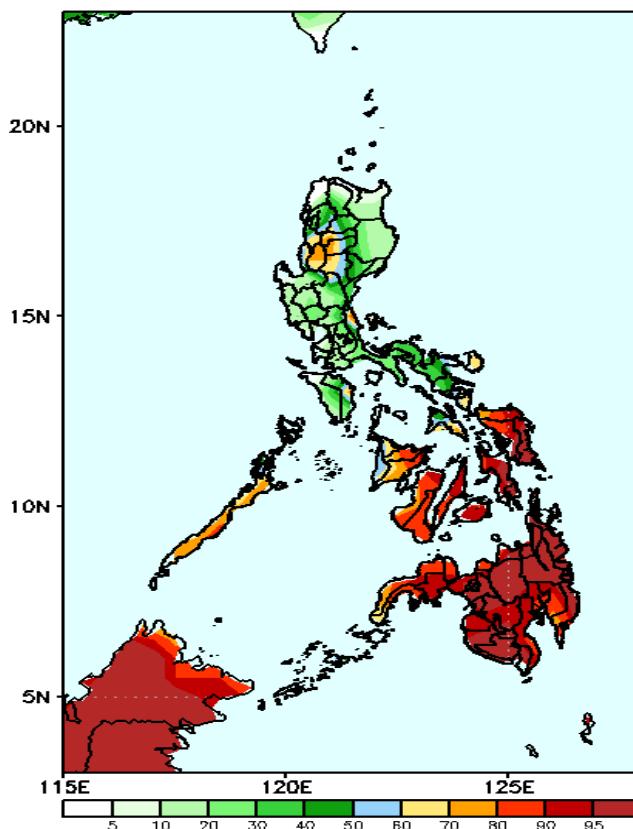
Week 1: May 01-07, 2023

GEFS Week-1 Precip Anomaly
Valid: 20230501 - 20230507



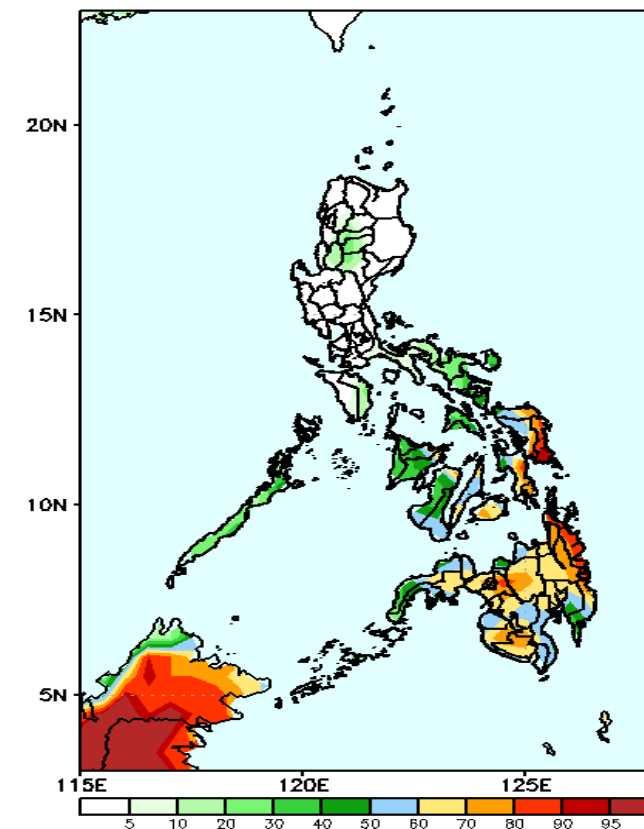
Rainfall deficit of more than 100mm is expected in Kalinga, Mt. Province, Ifugao, Abra & Ilocos Sur, 40-80 mm for the rest of Luzon and northern Mindanao (including Zamboanga Sibugay) while more than 100mm increase of rainfall in Eastern Samar & Leyte provinces, 20-60mm for the rest of Visayas and Mindanao during the forecast period.

GEFS Week-1 Exceedance Prob. > 25mm
Valid: 20230501 - 20230507



High to a very high probability to exceed 25mm of rainfall in most parts of Visayas and Mindanao; moderate to high probability in Palawan, Nueva Vizcaya, Catanduanes and some parts of CAR, while low likelihood over the rest of the country.

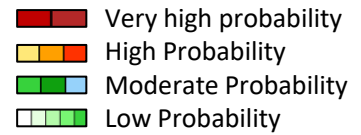
GEFS Week-1 Exceedance Prob. > 50mm
Valid: 20230501 - 20230507



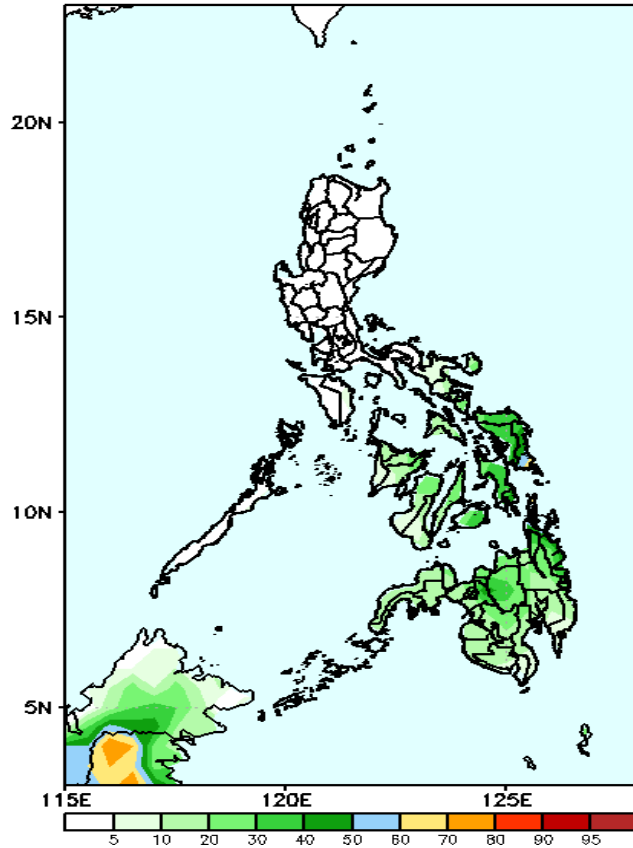
Moderate to High probability to exceed 50mm of rainfall in Mindanao, Eastern and Central Visayas and some parts of Western Visayas while low likelihood over the rest of the country.

Exceedance Probability > 100/150/200 mm

Week 1: May 01-07, 2023

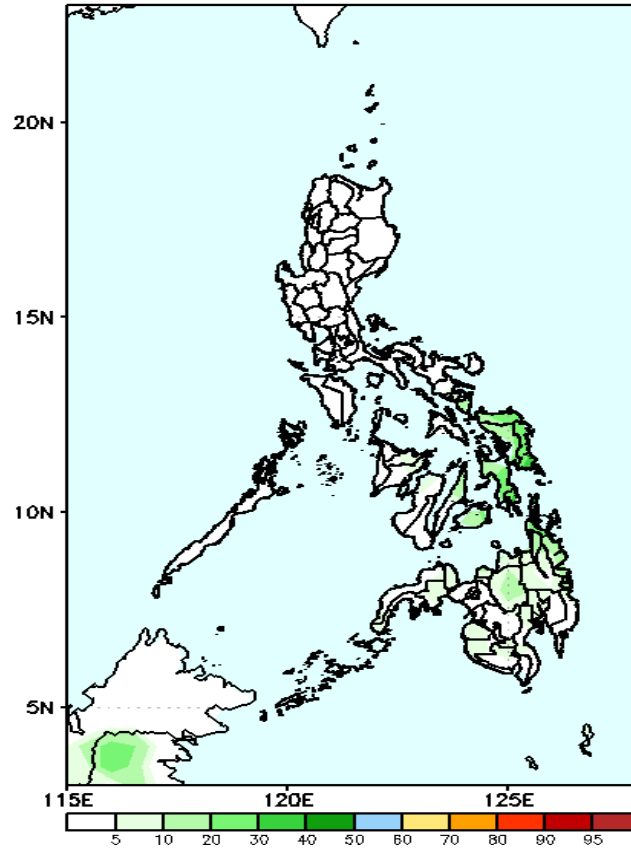


GEFS Week-1 Exceedance Prob. > 100mm
Valid: 20230501 – 20230507



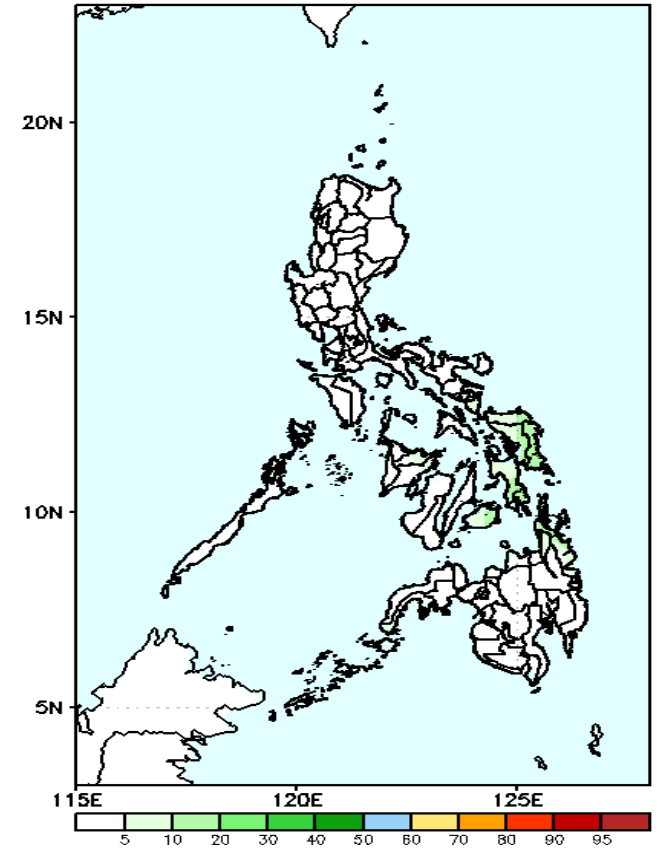
Low to moderate probability to exceed 100mm in some parts of Eastern and Central Mindanao and Eastern and Central Visayas while low likelihood over the rest of the country.

GEFS Week-1 Exceedance Prob. > 150mm
Valid: 20230501 – 20230507



Low probability of rainfall to exceed 150mm in most parts of the country during the forecast period.

GEFS Week-1 Exceedance Prob. > 200mm
Valid: 20230501 – 20230507

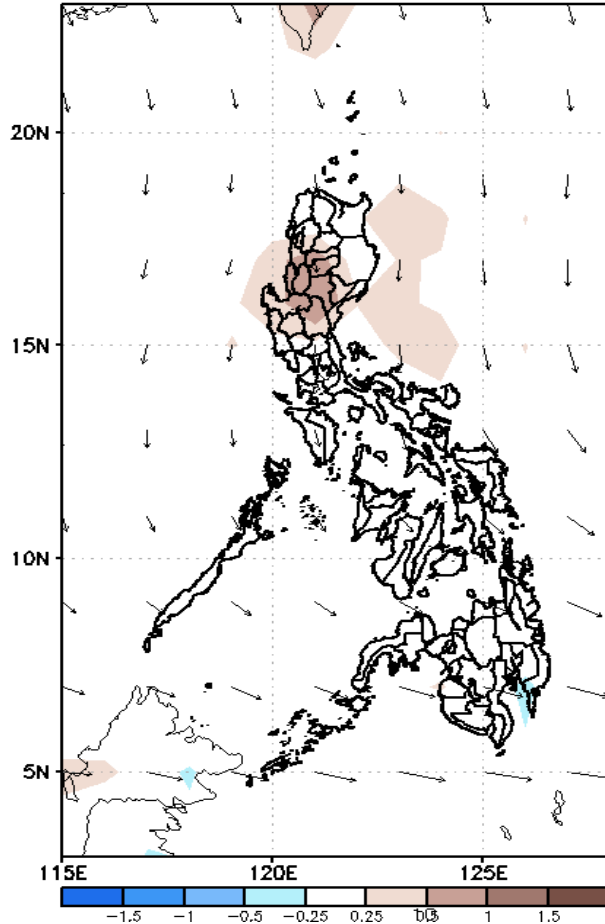


Low probability of rainfall to exceed 200mm in most parts of the country during the forecast period.

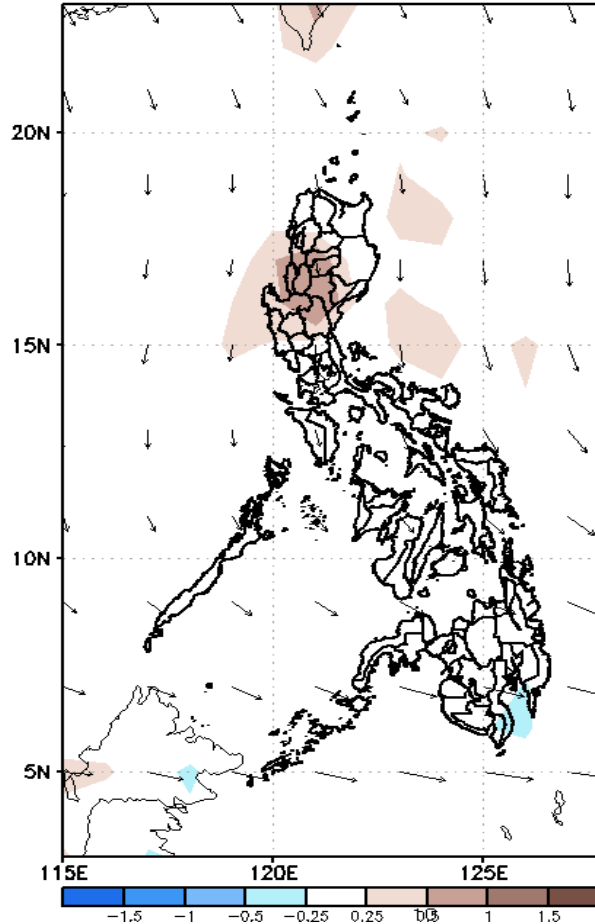
GEFS Week-2 Forecasts: Wind Anomaly Forecast

Week 2: May 08-14, 2023

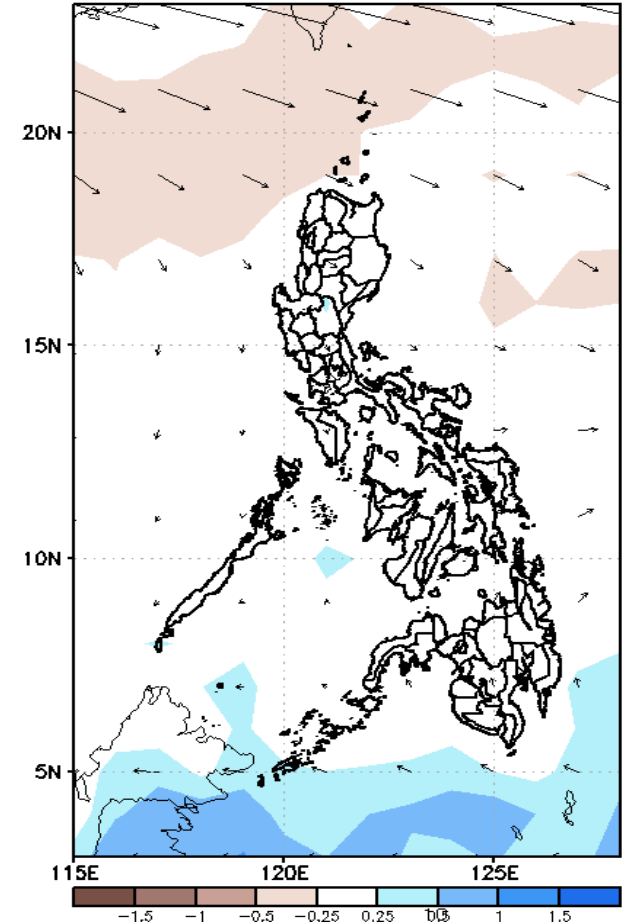
GEFS Week-2 850-hPa Divergence and Wind Anom
Valid: 20230508 - 20230514



GEFS Week-2 700-hPa Divergence and Wind Anom
Valid: 20230508 - 20230514

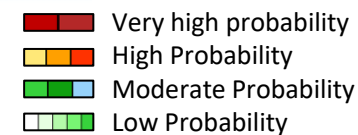


GEFS week-2 200-hPa Divergence and Wind Anom
Valid: 20230508 - 20230514



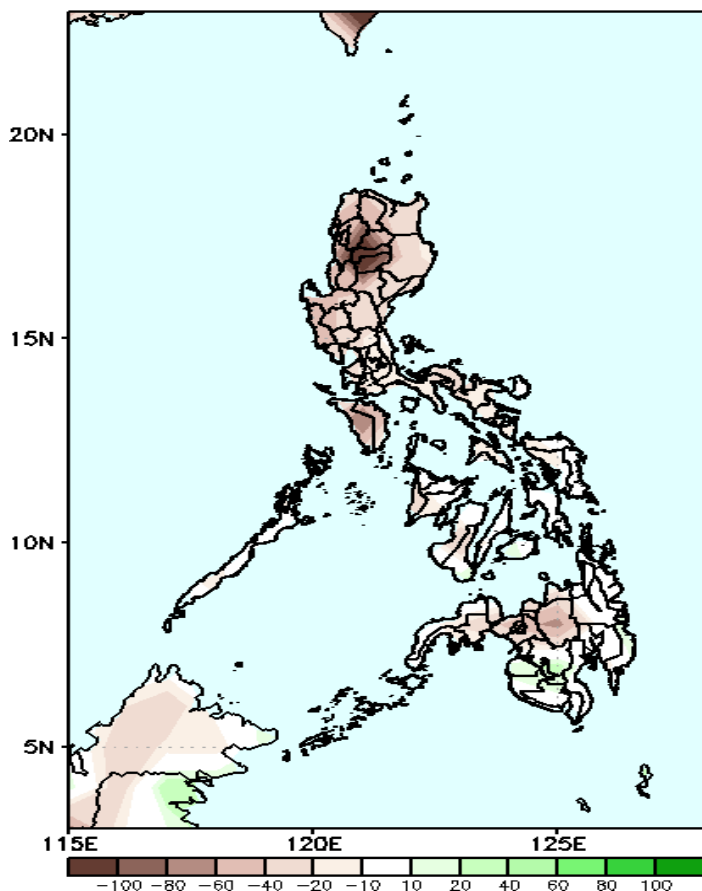
Easterlies is forecasted to affect most parts of the country; expect dry and hot weather during the forecast period.

Precipitation Anomaly and Exceedance Probability > 25/50 mm



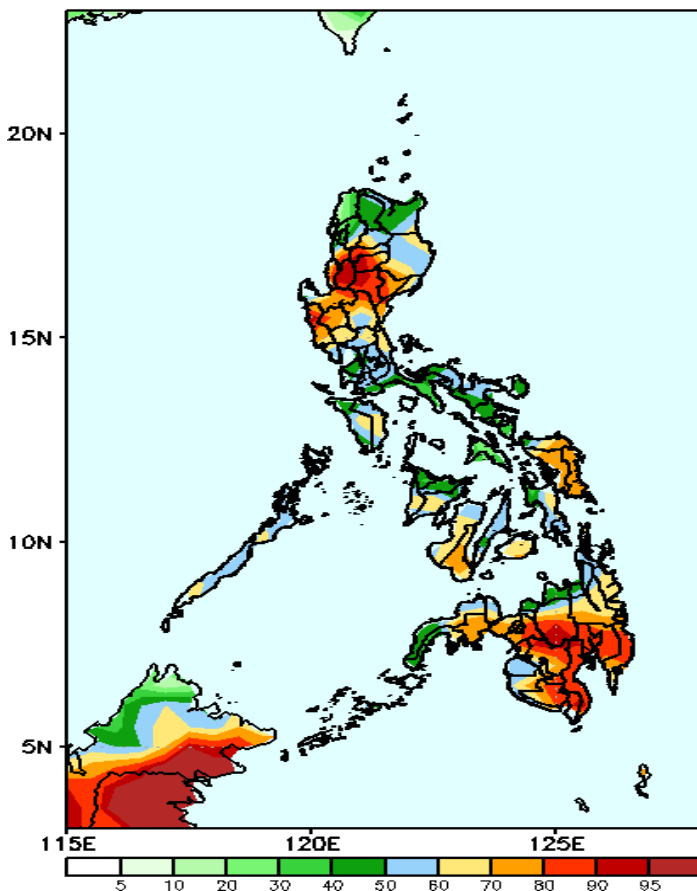
Week 2: May 08-14, 2023

GEFS Week-2 Precip Anomaly
Valid: 20230508 - 20230514



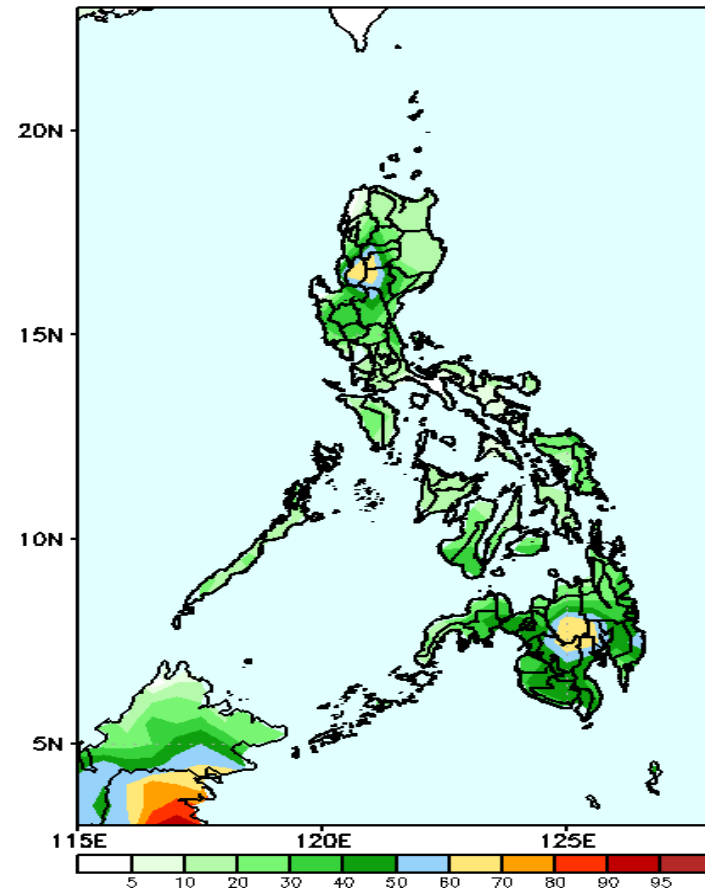
Rainfall deficit of more than 100mm is expected in Kalinga, Mt. Province, Ifugao, Abra & Ilocos Sur and 40-80mm for the rest of the country during the forecast period.

GEFS Week-2 Exceedance Prob. > 25mm
Valid: 20230508 - 20230514



Moderate to high probability to exceed 25mm of rainfall in most parts of the country.

GEFS Week-2 Exceedance Prob. > 50mm
Valid: 20230508 - 20230514



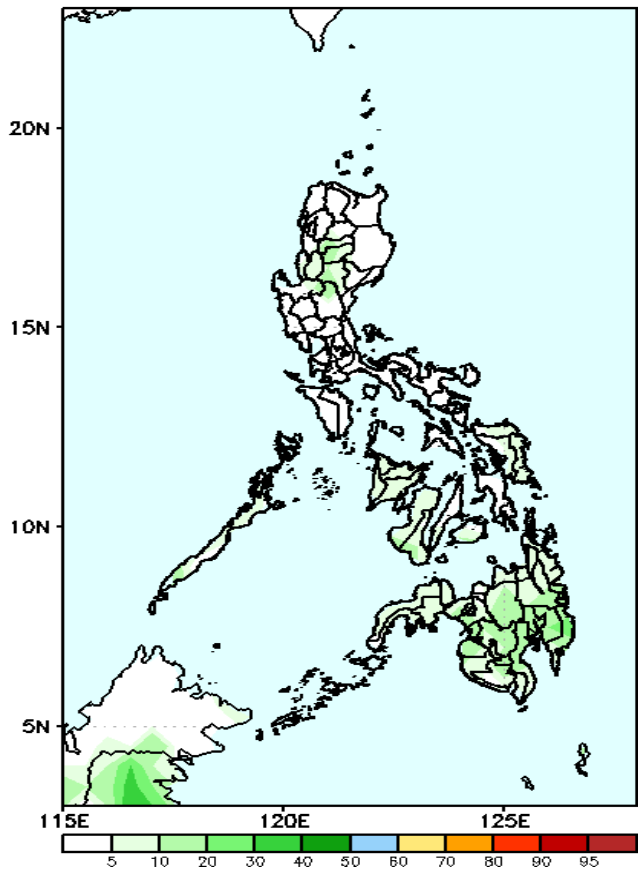
Moderate to High probability to exceed 50mm of rainfall in some parts of Central Mindanao, Abra and Nueva Vizcaya while low to moderate likelihood over the rest of the country.



Exceedance Probability > 100/150/200 mm

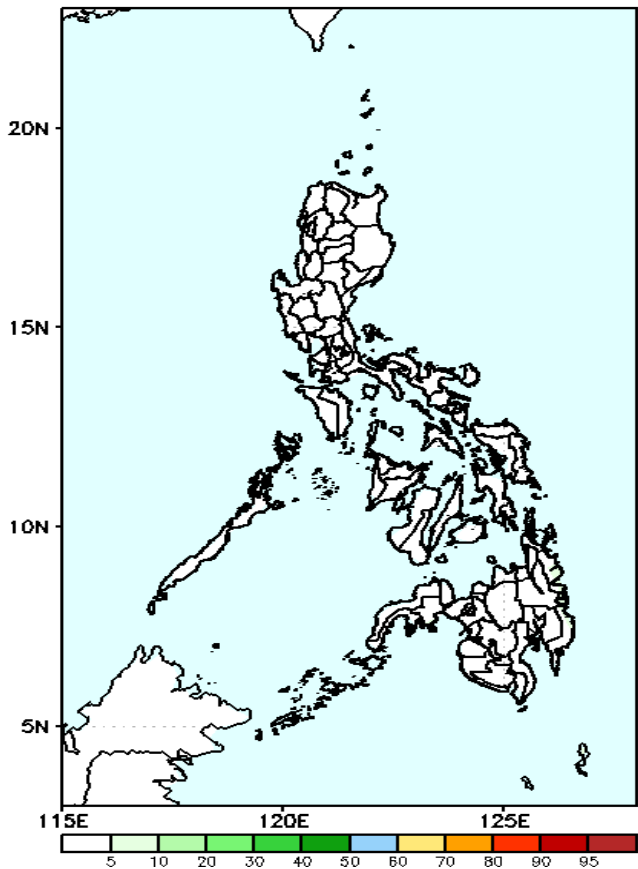
Week 2: May 08-14, 2023

GEFS Week-2 Exceedance Prob. > 100mm
Valid: 20230508 – 20230514



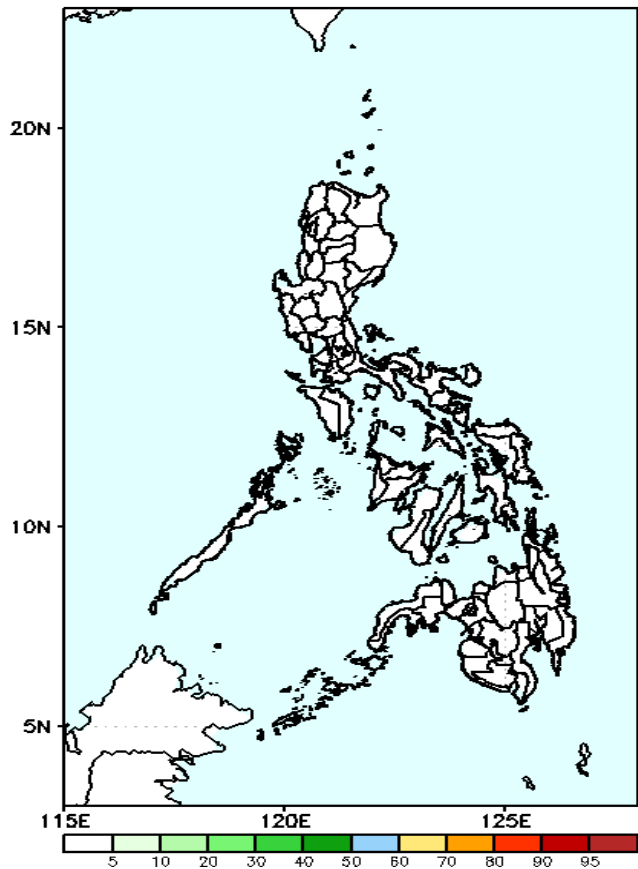
Low probability of rainfall to exceed 100mm in most parts of the country during the forecast period.

GEFS Week-2 Exceedance Prob. > 150mm
Valid: 20230508 – 20230514



Low probability of rainfall to exceed 150mm in most parts of the country during the forecast period.

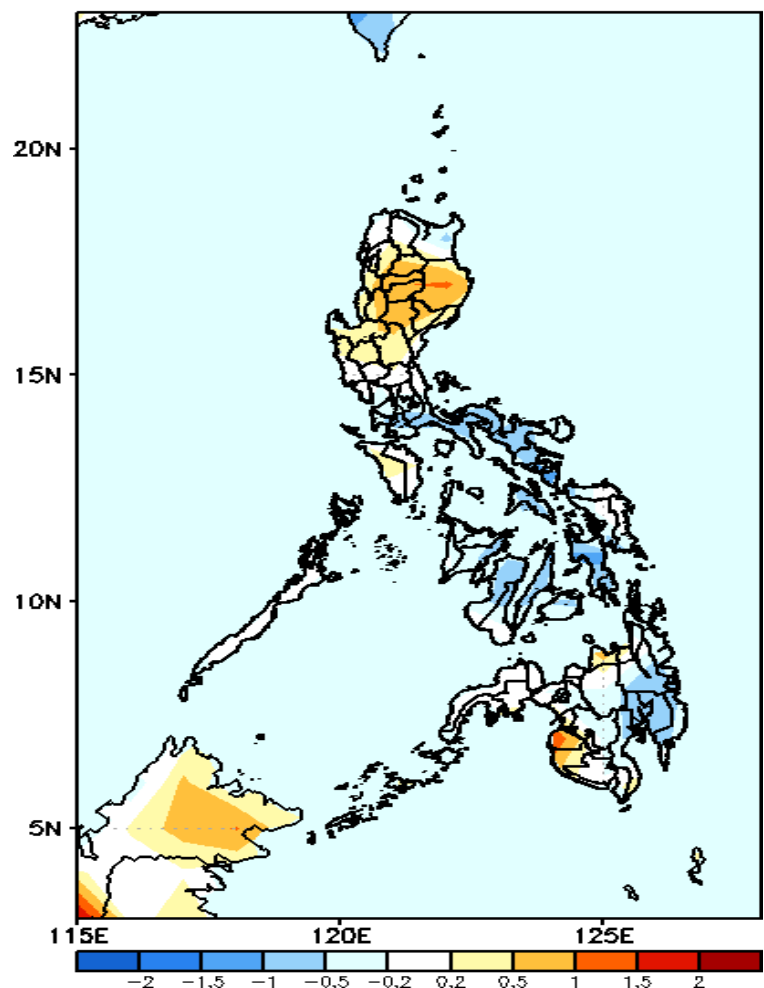
GEFS Week-2 Exceedance Prob. > 200mm
Valid: 20230508 – 20230514



Low probability of rainfall to exceed 200mm in most parts of the country during the forecast period.

GEFS Week-1 & 2 Forecasts: T2m Anomaly

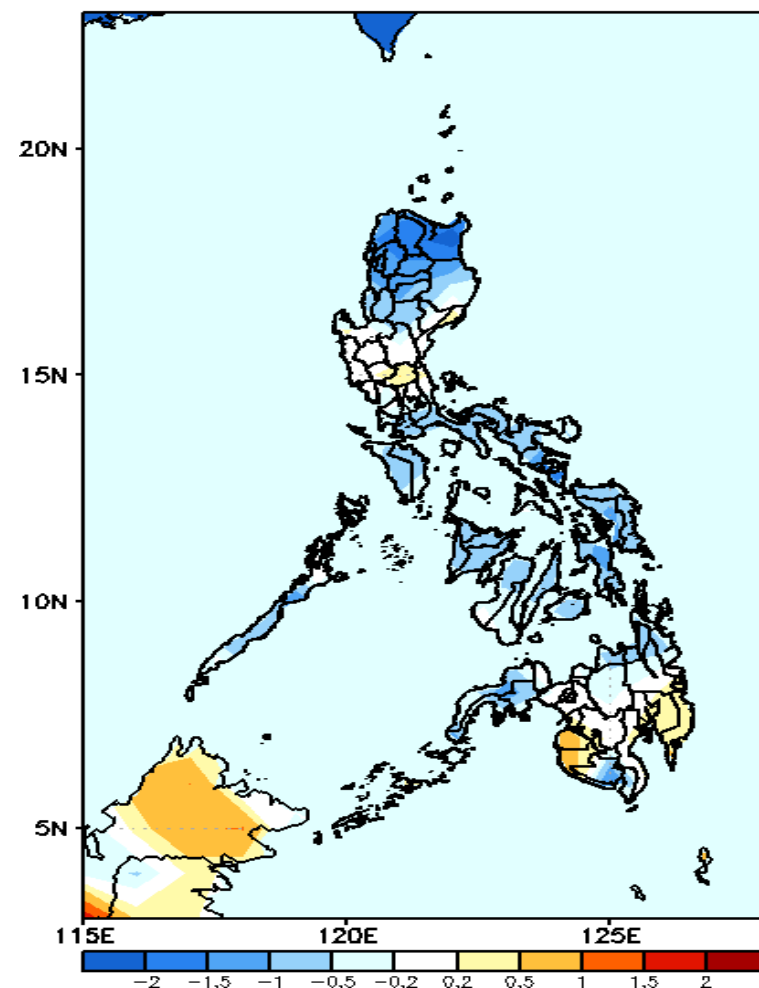
GEFS Week-1 T2m Anomaly
Valid: 20230501 — 20230507



2m Temperature Week 1: May 01-07, 2023

Average to slightly warmer than average surface air temperature will likely experience in most parts of Luzon and Mindanao while average to slightly cooler than average surface air temperature in Visayas and Davao Region during the forecast period.

GEFS Week-2 T2m Anomaly
Valid: 20230508 — 20230514



2m Temperature Week 2: May 08-14, 2023

Average to cooler than average surface air temperature will likely experience in most parts of the country except Maguindanao and Sultan Kudarat were slightly warmer than average temperature will likely have during the forecast period.